

GOVERNMENT BOND RETIREMENT MUTUAL FUND (GBRMF)



Investment Strategy

Aim to invest mainly in government and/or government guaranteed bonds

Fund Type as Classified by AIMC Category

Performance
Mid Term General Bond

August 2015

Fund size (Million Baht)

211.67

NAV per unit (Baht)

13.6285

Inception Date

19 December 2002

Fund Features

Fund Type

Open-ended Fixed Income Fund - Retirement Mutual Fund, which may have less investment diversification than SEC's guideline

Fund subscription

Every business day by 3.30 p.m.

Fund redemption

Every business day by 2.00 p.m.

Dividend Policy

No dividend payment

Minimum Subscription

First Subscription : 2,000 Baht
Next Subscription : none

Minimum Redemption

None

Settlement Period

T + 1

Direct Fee to Unitholder

(% of NAV)

Front-ended fee

1.00% (presently waived)

Back-ended fee

1.00% (presently waived)

Switching fee

Switching - in Exempted
Switching - out* Not over 0.25%

* Waived for switching among UOBAM's RMF funds

Fund Fee

(% of NAV)

Management Fee

≤0.87% p.a.

Trustee Fee

≤0.07% p.a.

Registrar Fee

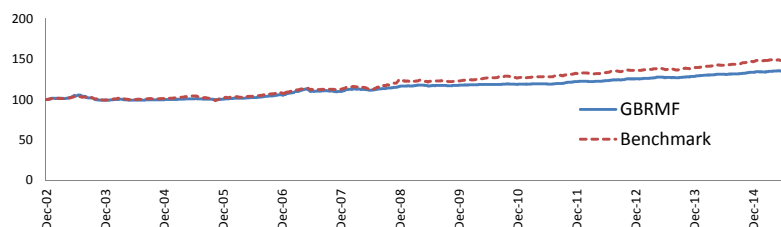
≤0.10% p.a.

As of 31 July 2015

Past Performance as of 31 July 2015

| Fund | Past performance (%) | | | | | |
|-------------------------------|----------------------|----------|--------|---------|------|-----------------|
| | 3 Months | 6 Months | 1 Year | 3 Years | YTD | Since Inception |
| GBRMF | 1.90 | 2.77 | 3.44 | 3.22 | 3.03 | 2.87 |
| Fixed Income Fund Benchmark * | 0.00 | 1.66 | 4.41 | 3.57 | 2.77 | 3.94 |
| Standard Deviation | 1.46 | 1.36 | 1.27 | 1.19 | 1.49 | 1.52 |

* Average between Thai BMA Government Bond Index and average 1 year Fixed Deposit Rate for 1,000,000 Baht of 3 Banks : BBL, KBANK and SCB.



* Since Inception Date until 31 July 2015

Asset Allocation

- Gov't and Guaranteed by MOF 80.03%
- Non Guaranteed-State Ent.Securities 0.00%
- Corporate Bond 19.44%
- Deposit P/N B/E Issue by Finance Institution 0.57%
- Deposit P/N B/E Issue by Non Finance Ins./Aval by Bank 0.00%
- Others Assets/liability -0.04%

Top 5 Holdings

- BOT172A 24.05%
- LB191A 10.68%
- LB176A 7.83%
- GGLB21NA 7.17%
- CB15813B 4.72%

* Morningstar rating data as of 31 July 2015

Risk level

| | | | | | | | | |
|---------------------------|--|--|----------------------|-------------------|------------|-------------|-----------------------|-------------------------------------|
| Low Risk / Low Complexity | 1 | 2 | 3 | 4 | 5 | 6 | 7 | 8 |
| | Money Market Fund that invests in domestic | Money Market Fund that partially invest in oversease | Government Bond Fund | Fixed Income Fund | Mixed Fund | Equity Fund | Industrial Group Fund | Fund that invests in optional Funds |

Past performance/Performance comparison related to capital market products are not guarantee the future performance. This performance document is created in accordance to AIMC standard. The awards and fund ranking as above are not accordance to AIMC standard. Investment contains risk. Investor should study and understand the fund feature, investment policy, return condition, tax guide, risk factors and fund performance carefully before investing.

Contact us

UOB Asset Management (Thailand) Co., Ltd. Tel. +66 (0) 2786-2222

email: wealthservice@uobam.co.th website: www.uobam.co.th

Our selling agents



AIMC Category Performance Report

Return and Risk statistics for Thailand Mutual funds

| AIMC Category | Peer Percentile | Return (%) | | | | | | Standard Deviation (%) | | | | | |
|--|-----------------|------------|-------|--------|-------|------|------|------------------------|------|------|------|------|------|
| | | 3M | 6M | 1Y | 3Y | 5Y | 10Y | 3M | 6M | 1Y | 3Y | 5Y | 10Y |
| Money Market Government | 5th Percentile | 0.37 | 0.83 | 1.77 | 2.10 | 2.20 | 2.25 | 0.06 | 0.05 | 0.05 | 0.10 | 0.14 | 0.29 |
| | 25th Percentile | 0.34 | 0.76 | 1.62 | 2.00 | 2.09 | 2.24 | 0.07 | 0.06 | 0.06 | 0.12 | 0.15 | 0.30 |
| | 50th Percentile | 0.30 | 0.72 | 1.56 | 1.96 | 2.02 | 2.19 | 0.07 | 0.08 | 0.06 | 0.12 | 0.16 | 0.30 |
| | 75th Percentile | 0.28 | 0.68 | 1.50 | 1.92 | 1.99 | 2.11 | 0.08 | 0.09 | 0.08 | 0.13 | 0.17 | 0.36 |
| | 95th Percentile | 0.20 | 0.54 | 1.20 | 1.79 | 1.93 | 1.81 | 0.09 | 0.11 | 0.09 | 0.16 | 0.19 | 0.66 |
| Money Market General | 5th Percentile | 0.42 | 0.95 | 2.05 | 2.39 | 2.31 | 2.52 | 0.06 | 0.05 | 0.06 | 0.09 | 0.13 | 0.29 |
| | 25th Percentile | 0.38 | 0.85 | 1.85 | 2.23 | 2.23 | 2.37 | 0.08 | 0.06 | 0.06 | 0.10 | 0.15 | 0.29 |
| | 50th Percentile | 0.35 | 0.81 | 1.81 | 2.14 | 2.12 | 2.31 | 0.08 | 0.07 | 0.07 | 0.11 | 0.15 | 0.31 |
| | 75th Percentile | 0.32 | 0.73 | 1.56 | 1.99 | 2.02 | 2.28 | 0.09 | 0.08 | 0.08 | 0.12 | 0.16 | 0.33 |
| | 95th Percentile | 0.26 | 0.61 | 1.39 | 1.84 | 1.81 | 2.00 | 0.10 | 0.10 | 0.09 | 0.14 | 0.18 | 0.34 |
| Short Term Government Bond | 5th Percentile | 0.38 | 0.86 | 2.04 | 2.29 | 2.34 | 2.35 | 0.05 | 0.06 | 0.05 | 0.12 | 0.16 | 0.29 |
| | 25th Percentile | 0.36 | 0.81 | 1.86 | 2.19 | 2.26 | 2.35 | 0.06 | 0.07 | 0.06 | 0.13 | 0.17 | 0.29 |
| | 50th Percentile | 0.34 | 0.76 | 1.64 | 2.07 | 2.16 | 2.35 | 0.08 | 0.08 | 0.06 | 0.14 | 0.19 | 0.29 |
| | 75th Percentile | 0.25 | 0.60 | 1.32 | 1.81 | 1.85 | 2.35 | 0.10 | 0.11 | 0.15 | 0.16 | 0.20 | 0.29 |
| | 95th Percentile | 0.18 | 0.48 | 1.06 | 1.60 | 1.60 | 2.35 | 0.12 | 0.13 | 0.22 | 0.17 | 0.20 | 0.29 |
| Short Term General Bond | 5th Percentile | 0.62 | 1.53 | 3.32 | 3.47 | 3.26 | 4.00 | 0.08 | 0.08 | 0.07 | 0.09 | 0.13 | 0.29 |
| | 25th Percentile | 0.54 | 1.31 | 2.85 | 2.92 | 2.83 | 2.91 | 0.10 | 0.11 | 0.09 | 0.12 | 0.15 | 0.34 |
| | 50th Percentile | 0.44 | 1.06 | 2.26 | 2.58 | 2.48 | 2.55 | 0.12 | 0.15 | 0.13 | 0.13 | 0.23 | 0.41 |
| | 75th Percentile | 0.41 | 1.01 | 2.12 | 2.44 | 2.32 | 2.38 | 0.20 | 0.23 | 0.19 | 0.28 | 0.32 | 0.65 |
| | 95th Percentile | 0.34 | 0.81 | 1.71 | 2.07 | 1.98 | 2.24 | 0.32 | 0.38 | 0.36 | 0.65 | 0.81 | 1.77 |
| Mid Term General Bond | 5th Percentile | 0.73 | 2.08 | 4.46 | 3.98 | 3.52 | 3.76 | 0.25 | 0.33 | 0.26 | 0.29 | 0.39 | 0.64 |
| | 25th Percentile | 0.58 | 1.84 | 4.06 | 3.59 | 3.13 | 3.25 | 0.51 | 0.59 | 0.51 | 0.54 | 0.60 | 1.05 |
| | 50th Percentile | 0.48 | 1.63 | 3.60 | 3.24 | 2.79 | 2.97 | 0.72 | 0.80 | 0.62 | 0.65 | 0.71 | 1.18 |
| | 75th Percentile | 0.34 | 1.35 | 3.21 | 3.04 | 2.58 | 2.62 | 0.91 | 0.89 | 0.78 | 0.76 | 0.78 | 1.63 |
| | 95th Percentile | 0.21 | 1.07 | 2.61 | 2.47 | 2.30 | 2.12 | 1.33 | 1.19 | 0.99 | 0.89 | 0.92 | 2.36 |
| Long Term General Bond | 5th Percentile | 0.58 | 2.14 | 4.02 | 3.89 | 3.28 | 3.39 | 0.70 | 0.63 | 0.53 | 0.52 | 0.54 | 0.56 |
| | 25th Percentile | 0.31 | 1.68 | 3.55 | 3.36 | 2.89 | 3.10 | 0.81 | 0.84 | 0.62 | 0.76 | 0.76 | 0.63 |
| | 50th Percentile | 0.19 | 1.50 | 3.20 | 2.94 | 2.51 | 2.80 | 0.98 | 1.05 | 0.78 | 0.81 | 0.79 | 1.73 |
| | 75th Percentile | -0.02 | 1.17 | 2.62 | 2.67 | 2.29 | 2.50 | 1.47 | 1.16 | 1.02 | 0.85 | 0.81 | 2.49 |
| | 95th Percentile | -1.06 | 0.93 | -2.38 | 1.55 | 2.12 | 2.30 | 6.47 | 4.73 | 4.24 | 2.89 | 0.93 | 4.58 |
| Global Bond Discretionary F/X Hedge or Unhedgen | 5th Percentile | 1.94 | 2.27 | 7.07 | 5.38 | 5.63 | 4.16 | 3.55 | 2.88 | 2.87 | 2.50 | 2.76 | 3.92 |
| | 25th Percentile | -0.08 | 1.49 | 5.12 | 4.37 | 5.33 | 3.95 | 4.69 | 3.45 | 3.44 | 2.97 | 3.11 | 4.64 |
| | 50th Percentile | -0.73 | 0.87 | 0.05 | 3.77 | 4.84 | 3.68 | 6.04 | 3.96 | 3.68 | 3.96 | 3.75 | 5.54 |
| | 75th Percentile | -1.51 | -0.29 | -1.17 | 2.67 | 2.83 | 3.40 | 7.73 | 4.84 | 4.46 | 4.35 | 6.14 | 6.44 |
| | 95th Percentile | -3.29 | -2.69 | -12.08 | -3.41 | 0.07 | 3.19 | 10.72 | 9.04 | 9.79 | 5.56 | 8.76 | 7.16 |
| Conservative Allocation | 5th Percentile | 0.42 | 1.15 | 3.74 | 4.48 | 5.84 | 3.77 | 0.89 | 0.37 | 0.56 | 0.73 | 0.68 | 2.91 |
| | 25th Percentile | 0.06 | 0.43 | 2.71 | 4.28 | 5.13 | 3.77 | 2.25 | 1.08 | 1.26 | 2.01 | 2.23 | 2.91 |
| | 50th Percentile | -0.50 | -0.07 | 2.19 | 4.12 | 4.60 | 3.77 | 3.09 | 1.43 | 2.01 | 2.48 | 3.28 | 2.91 |
| | 75th Percentile | -0.91 | -0.67 | 1.48 | 3.85 | 3.92 | 3.77 | 3.84 | 2.10 | 2.42 | 3.35 | 3.94 | 2.91 |
| | 95th Percentile | -2.75 | -1.85 | 0.99 | 2.35 | 2.21 | 3.77 | 5.09 | 4.40 | 4.22 | 4.22 | 4.83 | 2.91 |

AIMC Category Performance Report

Return and Risk statistics for Thailand Mutual funds

| AIMC Category | Peer Percentile | Return (%) | | | | | | Standard Deviation (%) | | | | | |
|--------------------------------------|-----------------|------------|--------|--------|--------|-------|-------|------------------------|-------|-------|-------|-------|-------|
| | | 3M | 6M | 1Y | 3Y | 5Y | 10Y | 3M | 6M | 1Y | 3Y | 5Y | 10Y |
| Moderate Allocation | 5th Percentile | -0.50 | 0.37 | 3.14 | 7.87 | 12.12 | 10.35 | 2.07 | 1.36 | 1.57 | 4.34 | 6.39 | 9.53 |
| | 25th Percentile | -1.11 | -0.66 | 2.12 | 6.96 | 10.41 | 9.52 | 4.75 | 2.38 | 3.21 | 7.11 | 9.10 | 12.52 |
| | 50th Percentile | -2.51 | -2.31 | 1.21 | 5.87 | 8.95 | 8.72 | 7.94 | 3.58 | 5.56 | 8.64 | 10.60 | 13.23 |
| | 75th Percentile | -3.59 | -3.87 | -0.46 | 5.06 | 7.23 | 7.60 | 9.86 | 5.56 | 7.49 | 9.96 | 11.39 | 14.67 |
| | 95th Percentile | -5.12 | -5.79 | -3.94 | 4.21 | 5.99 | 4.77 | 11.71 | 6.63 | 9.15 | 11.58 | 12.65 | 15.90 |
| Aggressive Allocation | 5th Percentile | 0.04 | 1.95 | 9.39 | 12.47 | 15.43 | 12.44 | 5.12 | 3.09 | 5.18 | 6.82 | 9.20 | 11.94 |
| | 25th Percentile | -2.40 | -3.20 | 3.39 | 10.53 | 13.45 | 10.52 | 12.16 | 5.39 | 7.89 | 12.76 | 13.62 | 17.87 |
| | 50th Percentile | -4.01 | -5.93 | 0.47 | 7.53 | 11.73 | 9.89 | 13.80 | 6.97 | 10.84 | 14.78 | 16.72 | 19.42 |
| | 75th Percentile | -5.19 | -6.79 | -3.07 | 6.05 | 8.99 | 7.94 | 15.00 | 8.73 | 12.61 | 16.17 | 17.32 | 21.10 |
| | 95th Percentile | -7.15 | -9.04 | -5.16 | 2.96 | 5.34 | 4.94 | 16.67 | 13.82 | 16.54 | 18.55 | 18.32 | 22.73 |
| Foreign Investment Allocation | 5th Percentile | 4.90 | 9.12 | 7.90 | 8.04 | 6.02 | 3.36 | 5.07 | 3.47 | 3.48 | 4.51 | 8.28 | 9.12 |
| | 25th Percentile | -0.10 | 4.27 | 2.55 | 6.64 | 5.86 | 3.17 | 7.63 | 6.04 | 5.07 | 5.69 | 9.27 | 10.28 |
| | 50th Percentile | -0.97 | 3.22 | -0.19 | 4.97 | 4.96 | 2.92 | 8.57 | 6.55 | 6.53 | 6.69 | 9.76 | 11.74 |
| | 75th Percentile | -2.19 | 0.51 | -3.29 | 4.80 | 4.42 | 2.67 | 10.05 | 9.41 | 8.51 | 7.48 | 10.72 | 13.20 |
| | 95th Percentile | -3.84 | -0.04 | -5.94 | 2.60 | 3.28 | 2.47 | 14.74 | 10.37 | 9.71 | 8.16 | 11.61 | 14.37 |
| Equity Large Cap | 5th Percentile | -2.79 | -2.86 | 2.25 | 12.60 | 18.07 | 13.79 | 13.23 | 5.06 | 8.63 | 12.31 | 15.08 | 18.42 |
| | 25th Percentile | -3.63 | -4.78 | -0.31 | 9.51 | 15.86 | 13.04 | 13.86 | 6.77 | 10.38 | 13.27 | 15.99 | 19.96 |
| | 50th Percentile | -4.62 | -6.58 | -2.65 | 7.53 | 12.66 | 10.65 | 15.03 | 7.39 | 10.94 | 13.96 | 16.54 | 21.23 |
| | 75th Percentile | -5.77 | -7.99 | -4.41 | 6.50 | 11.10 | 9.69 | 15.37 | 8.90 | 11.68 | 15.14 | 17.64 | 21.87 |
| | 95th Percentile | -10.09 | -12.01 | -8.85 | 1.47 | 7.26 | 8.70 | 19.48 | 12.52 | 14.70 | 17.46 | 18.51 | 22.68 |
| Equity Small – Mid Cap | 5th Percentile | -5.89 | -2.45 | 13.13 | 13.40 | 12.77 | 10.37 | 14.19 | 10.18 | 12.59 | 14.66 | 16.61 | 21.48 |
| | 25th Percentile | -6.14 | -3.29 | 12.30 | 10.96 | 12.17 | 10.37 | 14.62 | 11.64 | 13.70 | 16.38 | 17.31 | 21.48 |
| | 50th Percentile | -6.61 | -6.35 | 5.48 | 7.92 | 11.41 | 10.37 | 17.37 | 12.98 | 18.14 | 18.54 | 18.19 | 21.48 |
| | 75th Percentile | -7.96 | -8.40 | -3.85 | 6.87 | 6.95 | 10.37 | 21.11 | 14.86 | 19.31 | 20.45 | 18.50 | 21.48 |
| | 95th Percentile | -9.31 | -11.98 | -6.74 | 6.03 | 3.37 | 10.37 | 28.52 | 20.41 | 22.81 | 21.98 | 18.76 | 21.48 |
| Equity General | 5th Percentile | -1.92 | -3.05 | 7.75 | 13.64 | 16.10 | 13.78 | 11.10 | 5.04 | 8.06 | 10.79 | 13.91 | 17.71 |
| | 25th Percentile | -2.95 | -4.87 | 4.20 | 11.17 | 15.16 | 13.06 | 13.84 | 6.24 | 11.02 | 14.71 | 16.49 | 19.97 |
| | 50th Percentile | -4.76 | -5.83 | 0.25 | 8.85 | 12.94 | 11.63 | 14.87 | 8.67 | 11.72 | 15.73 | 17.30 | 20.90 |
| | 75th Percentile | -6.05 | -7.53 | -1.65 | 6.74 | 10.83 | 10.58 | 15.71 | 10.89 | 13.41 | 16.96 | 17.90 | 21.45 |
| | 95th Percentile | -7.99 | -9.87 | -6.85 | 3.06 | 6.66 | 7.17 | 18.00 | 15.40 | 17.77 | 18.77 | 19.48 | 22.89 |
| Global Equity | 5th Percentile | 13.67 | 19.97 | 27.84 | 27.40 | 24.04 | 2.12 | 11.39 | 8.03 | 7.79 | 7.28 | 10.04 | 12.46 |
| | 25th Percentile | 5.66 | 13.92 | 11.72 | 13.79 | 10.35 | 2.06 | 13.35 | 9.71 | 8.59 | 8.09 | 11.27 | 13.38 |
| | 50th Percentile | 2.21 | 8.57 | 5.71 | 11.72 | 9.33 | 1.97 | 15.10 | 10.34 | 9.47 | 9.50 | 12.27 | 14.54 |
| | 75th Percentile | -0.15 | 4.59 | 0.58 | 3.83 | 6.98 | 1.89 | 16.55 | 11.40 | 11.41 | 11.57 | 13.91 | 15.70 |
| | 95th Percentile | -17.35 | -13.45 | -37.85 | -22.36 | -7.70 | 1.83 | 25.72 | 32.01 | 29.43 | 29.50 | 23.11 | 16.63 |
| European Equity | 5th Percentile | 6.87 | 15.71 | 21.17 | 17.90 | 9.57 | | 16.27 | 11.44 | 10.70 | 10.25 | 14.44 | |
| | 25th Percentile | 5.63 | 13.86 | 12.48 | 16.43 | 8.73 | | 18.68 | 12.12 | 11.15 | 11.75 | 15.87 | |
| | 50th Percentile | 2.72 | 10.90 | 11.22 | 14.59 | 7.68 | | 20.97 | 13.04 | 11.85 | 13.61 | 17.67 | |
| | 75th Percentile | 1.35 | 9.05 | 7.46 | 12.53 | 6.75 | | 23.63 | 13.47 | 12.11 | 13.77 | 18.00 | |
| | 95th Percentile | -2.03 | 4.81 | -4.77 | 10.88 | 6.00 | | 28.38 | 14.79 | 15.86 | 13.90 | 18.27 | |

AIMC Category Performance Report

Return and Risk statistics for Thailand Mutual funds

| AIMC Category | Peer Percentile | Return (%) | | | | | | Standard Deviation (%) | | | | | |
|--|-----------------|------------|--------|--------|--------|--------|------|------------------------|-------|-------|-------|-------|------|
| | | 3M | 6M | 1Y | 3Y | 5Y | 10Y | 3M | 6M | 1Y | 3Y | 5Y | 10Y |
| Asia Pacific Ex Japant | 5th Percentile | -0.45 | 11.50 | 16.22 | 18.01 | 6.05 | | 13.66 | 6.88 | 8.92 | 8.35 | 11.04 | |
| | 25th Percentile | -2.79 | 5.82 | 5.20 | 11.42 | 5.69 | | 15.89 | 10.65 | 10.22 | 9.46 | 14.21 | |
| | 50th Percentile | -5.49 | 2.66 | 1.10 | 8.76 | 3.06 | | 20.57 | 12.09 | 11.81 | 10.93 | 14.56 | |
| | 75th Percentile | -7.93 | -1.21 | -4.21 | 4.81 | 2.30 | | 22.66 | 15.98 | 13.25 | 12.63 | 17.01 | |
| | 95th Percentile | -12.15 | -4.07 | -13.10 | -0.98 | 0.74 | | 30.82 | 23.91 | 18.92 | 14.05 | 17.89 | |
| Global Emerging Market | 5th Percentile | -1.04 | 6.78 | 2.31 | 5.84 | 6.26 | 5.60 | 10.52 | 4.64 | 4.70 | 7.96 | 10.26 | 7.41 |
| | 25th Percentile | -4.45 | 2.85 | -2.89 | 3.08 | 3.14 | 5.60 | 15.16 | 9.94 | 10.40 | 10.01 | 13.27 | 7.41 |
| | 50th Percentile | -7.18 | -1.85 | -10.75 | 2.41 | 0.25 | 5.60 | 18.42 | 15.12 | 13.09 | 11.75 | 15.85 | 7.41 |
| | 75th Percentile | -9.71 | -5.55 | -17.57 | -2.59 | -4.97 | 5.60 | 21.61 | 20.85 | 19.10 | 15.31 | 18.25 | 7.41 |
| | 95th Percentile | -16.83 | -9.08 | -27.80 | -12.07 | -10.00 | 5.60 | 28.58 | 25.97 | 23.06 | 17.84 | 21.49 | 7.41 |
| US Equity | 5th Percentile | 8.05 | 15.63 | 20.70 | 17.67 | 15.15 | | 12.69 | 9.06 | 8.79 | 8.44 | 11.00 | |
| | 25th Percentile | 6.07 | 12.49 | 18.39 | 16.85 | 14.51 | | 12.83 | 9.56 | 9.20 | 8.71 | 11.17 | |
| | 50th Percentile | 4.07 | 9.43 | 12.90 | 16.51 | 13.71 | | 13.33 | 9.71 | 9.56 | 8.88 | 11.38 | |
| | 75th Percentile | 1.73 | 6.90 | 10.64 | 15.45 | 11.32 | | 13.85 | 11.28 | 9.99 | 10.30 | 13.71 | |
| | 95th Percentile | -0.49 | 4.84 | 5.20 | 5.68 | 9.41 | | 15.28 | 13.38 | 11.45 | 12.57 | 15.58 | |
| Japan Equity | 5th Percentile | 10.39 | 20.77 | 32.67 | 22.11 | 11.82 | | 13.41 | 2.38 | 6.58 | 18.70 | 19.23 | |
| | 25th Percentile | 5.36 | 17.78 | 31.26 | 22.11 | 11.82 | | 15.72 | 8.05 | 8.07 | 18.70 | 19.23 | |
| | 50th Percentile | 4.15 | 16.08 | 28.21 | 22.11 | 11.82 | | 17.67 | 9.47 | 8.80 | 18.70 | 19.23 | |
| | 75th Percentile | 2.90 | 15.69 | 25.08 | 22.11 | 11.82 | | 18.08 | 12.25 | 9.49 | 18.70 | 19.23 | |
| | 95th Percentile | -2.18 | 11.15 | 15.40 | 22.11 | 11.82 | | 27.49 | 16.50 | 14.15 | 18.70 | 19.23 | |
| China Equity | 5th Percentile | -8.43 | 13.93 | 42.90 | 15.89 | 6.27 | | 30.46 | 24.99 | 17.63 | 12.47 | 14.11 | |
| | 25th Percentile | -12.29 | 8.36 | 15.94 | 12.85 | 4.79 | | 36.03 | 29.84 | 22.01 | 17.05 | 18.23 | |
| | 50th Percentile | -14.78 | 5.13 | 11.11 | 10.54 | 2.34 | | 36.43 | 33.25 | 24.45 | 19.65 | 21.65 | |
| | 75th Percentile | -18.85 | 0.42 | 2.27 | 9.63 | 1.59 | | 37.75 | 34.96 | 25.78 | 20.35 | 22.07 | |
| | 95th Percentile | -21.02 | -3.87 | -1.32 | 6.59 | 1.30 | | 61.47 | 39.22 | 32.76 | 26.89 | 24.11 | |
| Fund of Property fund | 5th Percentile | 4.97 | 7.52 | 7.60 | 8.91 | 13.21 | | 4.03 | 2.08 | 3.77 | 8.11 | 8.55 | |
| | 25th Percentile | 4.11 | 6.14 | 6.16 | 8.41 | 12.79 | | 4.40 | 2.19 | 3.88 | 8.39 | 8.79 | |
| | 50th Percentile | 3.38 | 4.35 | 5.92 | 8.21 | 12.27 | | 5.19 | 2.67 | 4.15 | 9.03 | 9.09 | |
| | 75th Percentile | 0.03 | 2.66 | 4.64 | 7.50 | 11.74 | | 5.34 | 3.32 | 4.72 | 9.27 | 9.40 | |
| | 95th Percentile | -0.81 | 2.28 | 1.04 | 6.01 | 11.32 | | 6.82 | 5.17 | 6.02 | 10.49 | 9.64 | |
| Free Hold | 5th Percentile | 10.83 | 11.06 | 22.45 | 26.36 | 18.69 | | 6.33 | 2.46 | 3.90 | 4.85 | 6.62 | |
| | 25th Percentile | 2.37 | 5.22 | 5.58 | 10.76 | 9.52 | | 8.83 | 4.63 | 6.03 | 8.32 | 8.25 | |
| | 50th Percentile | 0.61 | 1.65 | 0.40 | 5.18 | 7.64 | | 13.05 | 6.42 | 8.29 | 12.65 | 11.12 | |
| | 75th Percentile | -0.64 | -0.05 | -3.04 | 2.67 | 5.14 | | 27.17 | 14.53 | 15.35 | 22.10 | 23.12 | |
| | 95th Percentile | -22.19 | -28.32 | -32.60 | -4.28 | 2.23 | | 67.05 | 23.93 | 20.89 | 69.51 | 37.09 | |
| Mixed (between free and lease hold) | 5th Percentile | 16.81 | 15.57 | 28.52 | 21.40 | 21.81 | | 9.46 | 4.49 | 4.63 | 8.01 | 11.31 | |
| | 25th Percentile | 8.28 | 8.91 | 10.22 | 10.46 | 15.85 | | 10.97 | 5.31 | 6.20 | 10.38 | 11.87 | |
| | 50th Percentile | 6.14 | 4.44 | 2.20 | 8.38 | 9.99 | | 13.57 | 6.68 | 7.39 | 12.53 | 13.08 | |
| | 75th Percentile | 0.87 | 2.04 | -6.12 | -5.85 | -2.42 | | 21.55 | 8.46 | 9.20 | 16.10 | 20.26 | |
| | 95th Percentile | -2.93 | -7.98 | -15.62 | -20.65 | -13.79 | | 56.20 | 30.50 | 25.64 | 26.00 | 25.35 | |

AIMC Category Performance Report

Return and Risk statistics for Thailand Mutual funds

| AIMC Category | Peer Percentile | Return (%) | | | | | | Standard Deviation (%) | | | | | |
|------------------------------------|-----------------|------------|--------|--------|--------|--------|-----|------------------------|-------|-------|-------|-------|-----|
| | | 3M | 6M | 1Y | 3Y | 5Y | 10Y | 3M | 6M | 1Y | 3Y | 5Y | 10Y |
| Commodities Energy | 5th Percentile | -13.26 | -2.18 | -49.41 | -18.38 | -11.81 | | 20.03 | 24.47 | 28.42 | 21.09 | 20.88 | |
| | 25th Percentile | -15.16 | -5.11 | -53.58 | -19.19 | -12.70 | | 30.43 | 33.20 | 33.84 | 24.85 | 24.20 | |
| | 50th Percentile | -16.86 | -6.47 | -54.51 | -19.75 | -13.38 | | 30.98 | 33.81 | 34.28 | 25.31 | 24.55 | |
| | 75th Percentile | -19.88 | -11.20 | -57.10 | -20.93 | -13.77 | | 31.92 | 35.99 | 34.86 | 25.57 | 25.16 | |
| | 95th Percentile | -20.69 | -11.77 | -58.06 | -21.36 | -14.62 | | 32.67 | 37.21 | 35.55 | 25.97 | 25.87 | |
| Commodities Precious Metals | 5th Percentile | -1.41 | -6.58 | -8.67 | -10.05 | -0.82 | | 11.35 | 6.84 | 7.73 | 14.61 | 14.92 | |
| | 25th Percentile | -4.21 | -8.21 | -9.59 | -10.40 | -1.14 | | 12.38 | 11.00 | 10.97 | 15.37 | 15.26 | |
| | 50th Percentile | -7.74 | -11.56 | -13.58 | -11.11 | -1.19 | | 13.78 | 11.37 | 12.14 | 15.99 | 16.55 | |
| | 75th Percentile | -10.15 | -13.89 | -16.09 | -12.12 | -2.10 | | 14.97 | 11.96 | 12.43 | 16.64 | 17.35 | |
| | 95th Percentile | -10.38 | -14.31 | -16.63 | -12.51 | -2.39 | | 16.64 | 12.20 | 12.95 | 17.00 | 17.91 | |

Return and Risk statistics for Thailand Mutual funds

ข้อตกลงและเงื่อนไขของข้อมูลเปรียบเทียบผลการดำเนินงานแบบเปอร์เซ็นต์ไทล์
(Disclaimer of Peer group Fund Performance)

1. ผลการดำเนินงานในอดีตของกองทุน มิได้เป็นสิ่งยืนยันถึงผลการดำเนินงานในอนาคต
2. ผู้ลงทุนสามารถดูข้อมูลฉบับเต็มได้ที่ www.aimc.or.th
3. ผลการดำเนินงานของกองทุนที่การเปรียบเทียบแบ่งตามประเภทกองทุนรวมภายใต้ข้อกำหนดของสมาคมบริษัทจัดการลงทุน โดยกองทุนที่จะถูกเปรียบเทียบผลการดำเนินงานในแต่ละช่วงเวลากับกองทุนประเภทเดียวกันในระดับเปอร์เซ็นต์ไทล์ (Percentiles) ต่างๆ โดยแบ่งออกเป็น
 - 5th Percentile แสดงผลการดำเนินงานของกองทุนอันดับที่ 5 เปอร์เซ็นต์ไทล์ (Top 5% performance)
 - 25th Percentile แสดงผลการดำเนินงานของกองทุนอันดับที่ 25 เปอร์เซ็นต์ไทล์ (Top 25% performance)
 - 50th Percentile แสดงผลการดำเนินงานของกองทุนอันดับที่ 50 เปอร์เซ็นต์ไทล์ (Median performance)
 - 75th Percentile แสดงผลการดำเนินงานของกองทุนอันดับที่ 75 เปอร์เซ็นต์ไทล์ (Bottom 25% performance)
 - 95th Percentile แสดงผลการดำเนินงานของกองทุนอันดับที่ 95 เปอร์เซ็นต์ไทล์ (Bottom 5% performance)
4. ผลตอบแทนที่มีอายุเกินหนึ่งปีนั้นมีการแสดงเป็นผลตอบแทนต่อปี

เมื่อผู้ลงทุนทราบผลตอบแทนของกองทุนที่ลงทุน สามารถนำไปเปรียบเทียบกับเปอร์เซ็นต์ไทล์ตามตาราง จะทราบว่ากองทุนที่ลงทุนนั้นอยู่ในช่วงที่เท่าใดของประเภทกองทุนรวมนั้น